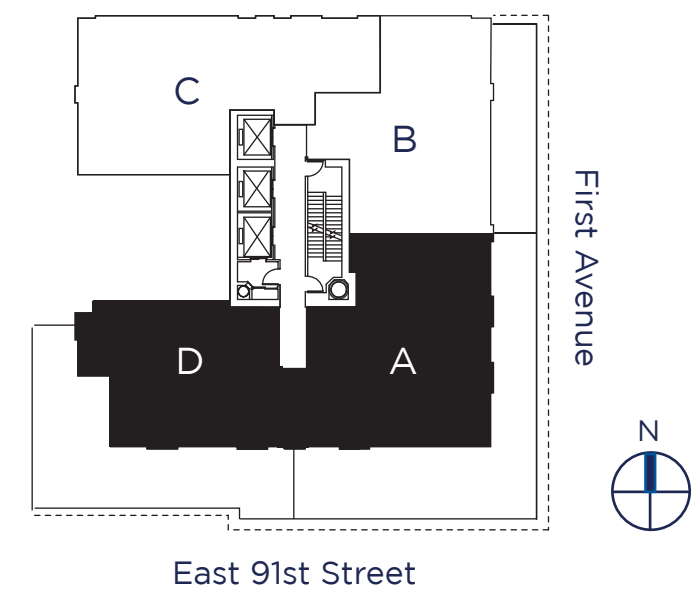
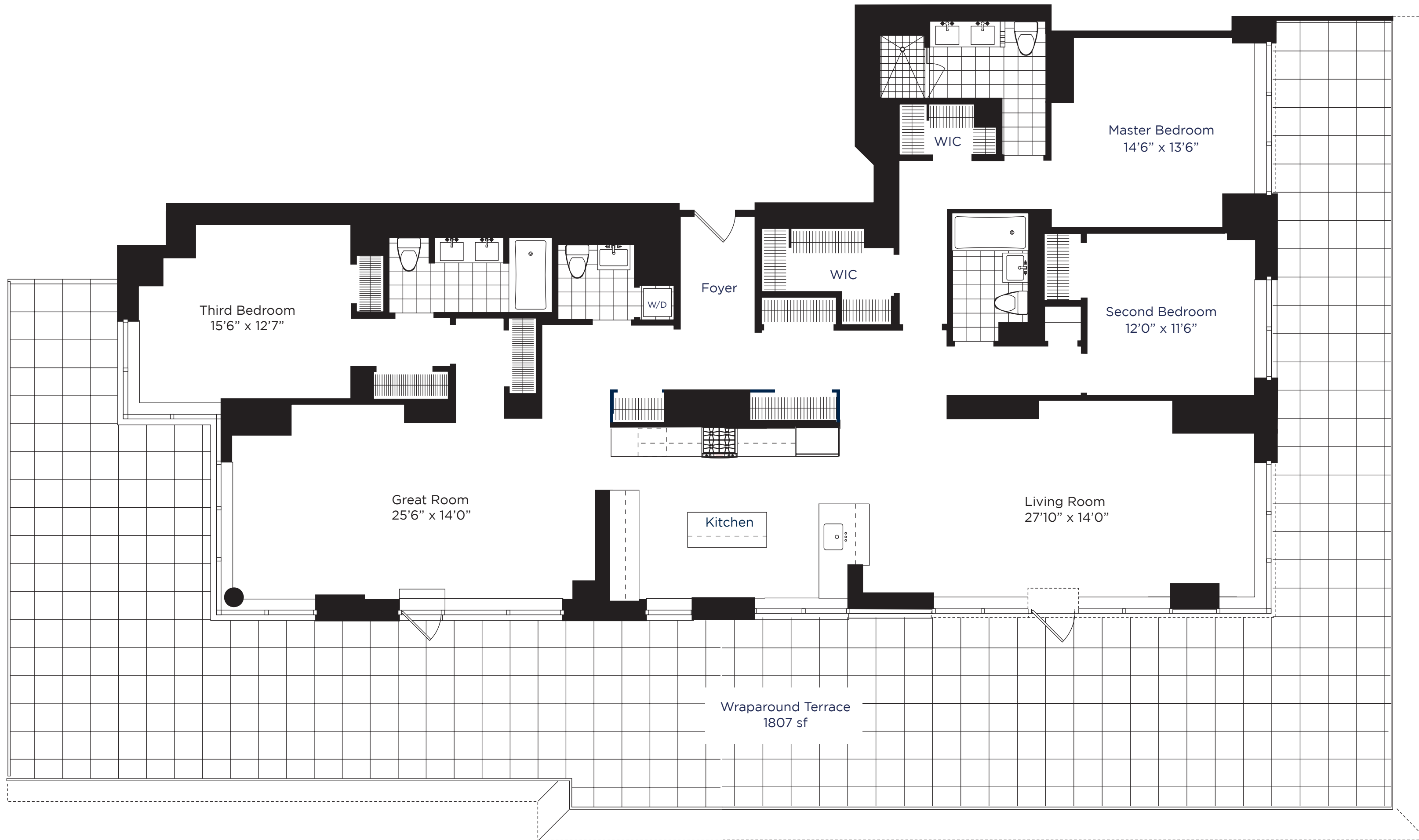




**RESIDENCES A & D Combined
Floors 7**
2,597 sf • 3 Bedrooms • 4 Baths
Wraparound Terrace

Residence Features

- Wraparound Terrace
- Windowed Kitchen with Island
- Corner Living Room
- Great Room
- Master Bedroom with Two Walk-In Closets
- Oversized Shower in Master Bath
- Washer / Dryer



The complete offering terms are in an offering plan available from the sponsor. File No. CP06 - 0233. Sponsor: 1765 First Associates LLC, 820 Elmont Rd., Elmont, NY 11003.
Property: 333 East 91st St., NY, NY 10128.

All dimensions are approximate and subject to normal construction variances and tolerances. Square footage exceeds the usable floor area and includes columns, mechanical pipes shafts, shaftways, chaseways and conduits and other Common Elements. Plans and dimensions may contain minor variations from floor to floor.

© 2008 Azure. All Rights Reserved.

333 East 91st Street
(212) 828.4848

www.azureny.com